



NVC LIGHTING TECHNOLOGY CORPORATION
<http://www.nvc-lighting.com.cn>
Email: shichong@nvc.com
Tel: 0752-2786537 Fax: 0752-2786994
Address: NVC Industrial Park, Ruhu, Huizhou, Guangdong, China.

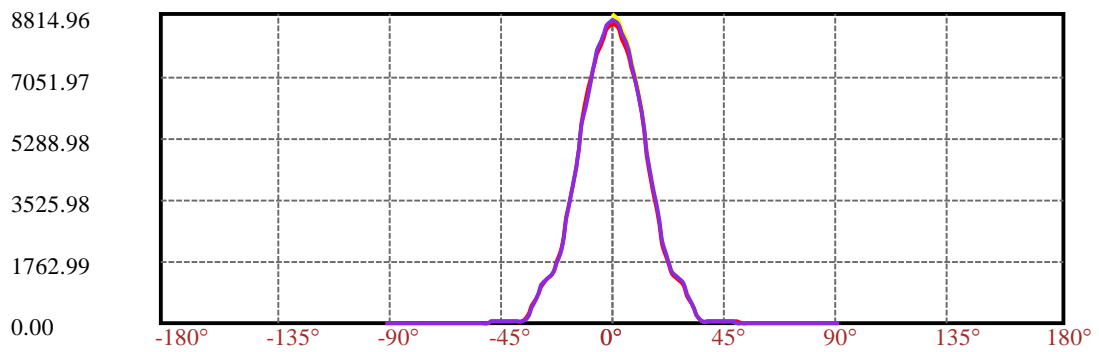
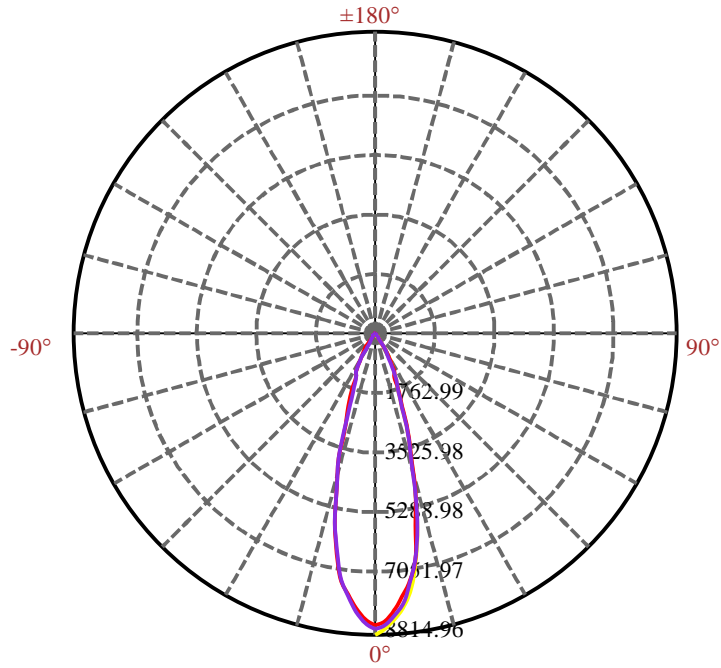
TLED306A 50W 4000K 24度

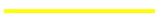


LumCAT: TLED306A 50W 4000K 24度	Luminaire:
Report No: 20120730DJ573	Voltage(V): 230.000
Test No:	Current(A): 0.219
LampCAT: : LED	Power (W): 47.900
Lamp flux(lm): -1.0	PF: 0.949
Number of Lamps: 0	Ballast type:
Length(mm): 0	Width(mm): 0
Phm Type: C	Height(mm): 0

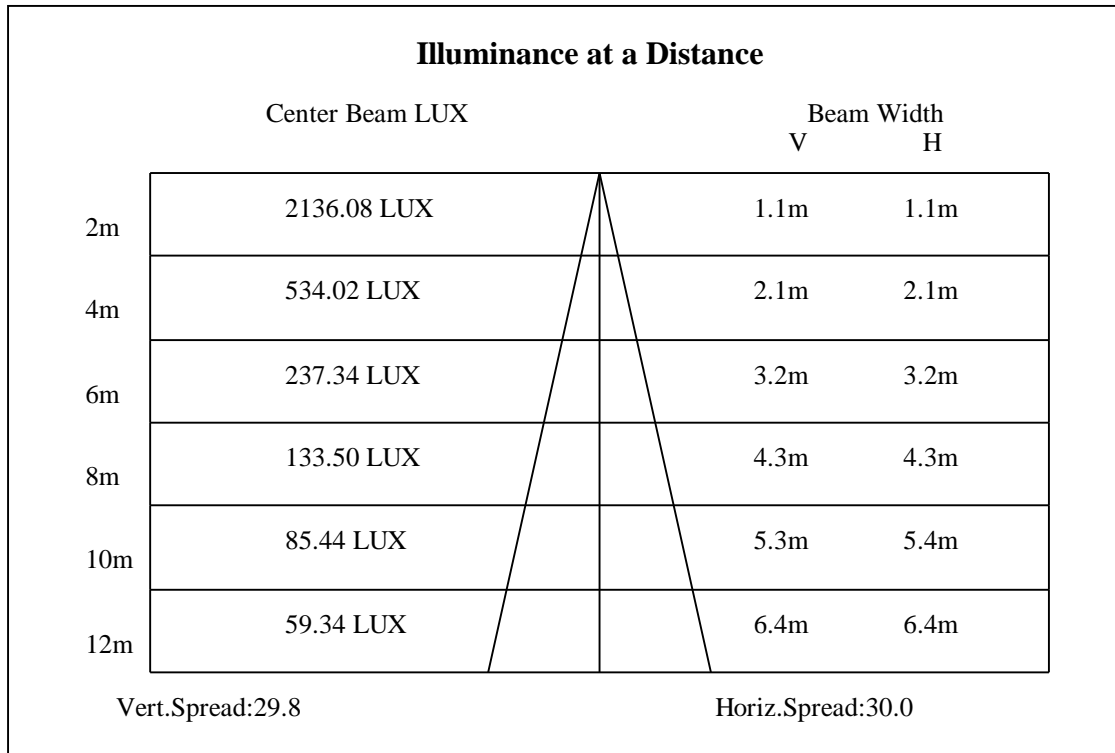
Photometric Results

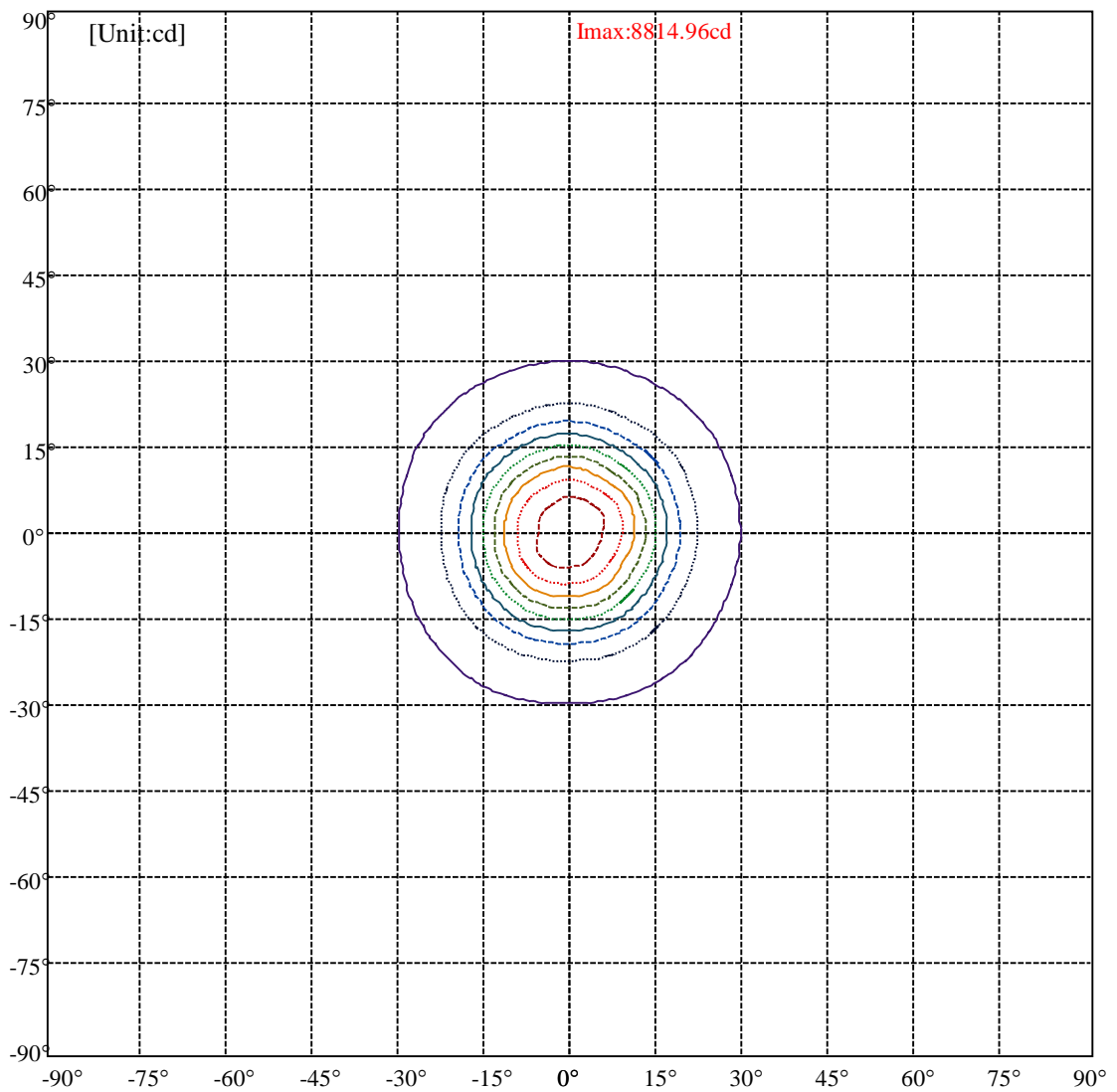
Lumens(lm): 2739.05
Efficiency(%): 0.00%
Lumens(lm)/Power(W): 57.18
Central intensity(cd): 8544.311
Maximum intensity(cd): 8814.959
Angle of maximum intensity: C=30.0 γ =0.0
Beam Angle(50% lmax): [H]Left=14.8 Right=15.2
 [V]Left=14.8 Right=14.9
Field angle(10% lmax): [H]Left=29.4 Right=29.7
 [V]Left=29.2 Right=29.5
Maximum s/h: C0_180=0.25 C90_270=0.25
Up flux rate of lamp(%): 0.00%
Down flux rate of lamp(%): 0.00%
Up flux rate of LUM(%): - -
Down flux rate of LUM(%): 100.00%
CIE Type : Direct lighting
Output flux ratio in π solid angle : 99.650%



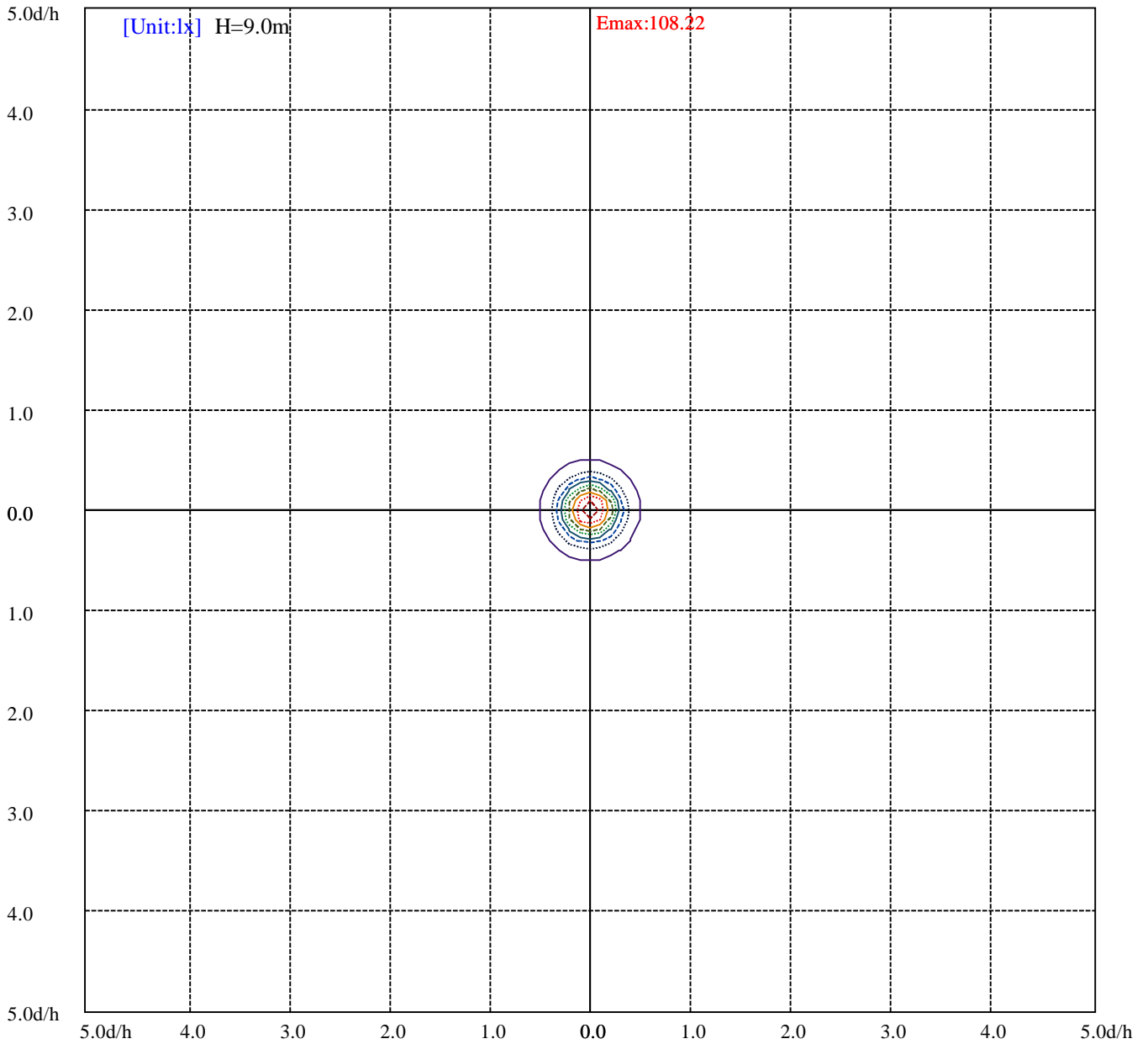


C30(Max): 
C0/C180: 
C90/C270: 





(10% I _{max}) 866.383	—
(20% I _{max}) 1732.77	⋯
(30% I _{max}) 2599.15	- - -
(40% I _{max}) 3465.53	—
(50% I _{max}) 4331.91	⋯
(60% I _{max}) 5198.3	- - -
(70% I _{max}) 6064.68	—
(80% I _{max}) 6931.06	⋯
(90% I _{max}) 7797.44	- - -



- (10%Emax) 10.82242 ————
- (20%Emax) 21.64482 ······
- (30%Emax) 32.46729 - - - - -
- (40%Emax) 43.28963 ————
- (50%Emax) 54.1121 ······
- (60%Emax) 64.93444 - - - - -
- (70%Emax) 75.75691 ————
- (80%Emax) 86.57938 ······
- (90%Emax) 97.40173 - - - - -