



NVC LIGHTING TECHNOLOGY CORPORATION
<http://www.nvc-lighting.com.cn>
Email: shichong@nvc.com
Tel:0752-2786537 Fax:0752-2786994
Address:NVC Industrial Park, Ruhu, Huizhou, Guangdong, China.

NLED111D 9W 6500K

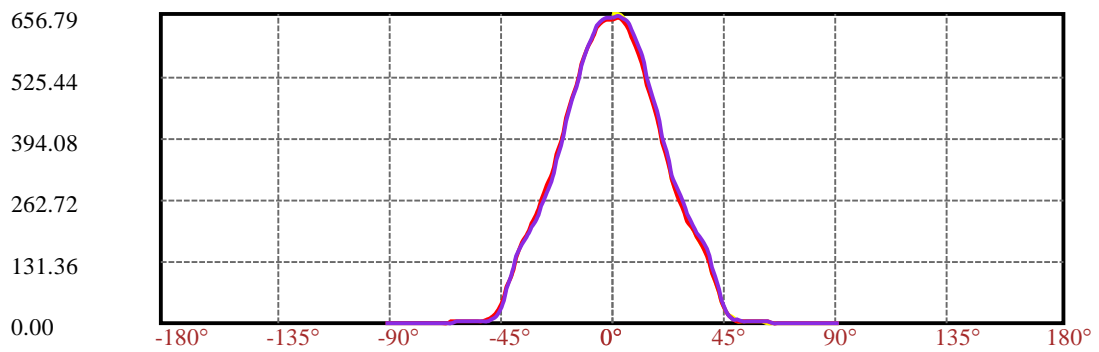
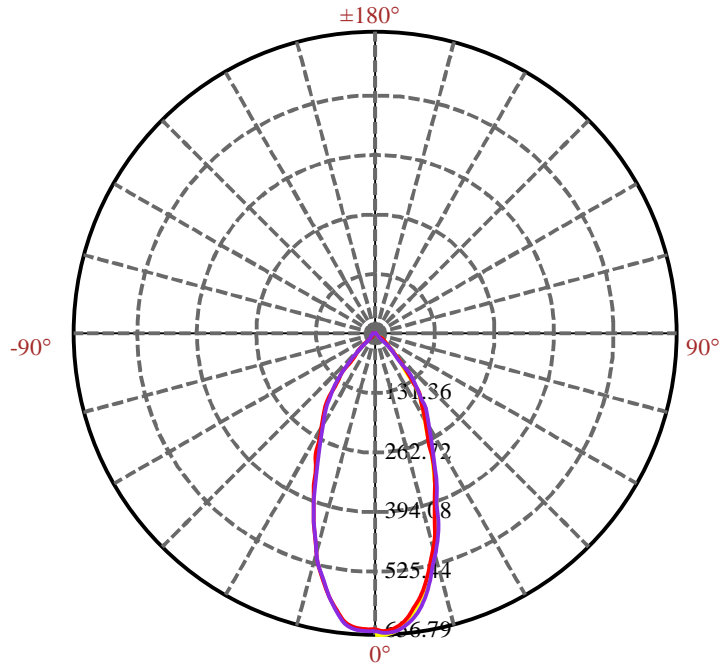
LumCAT: NLED111D 9W 6500K
Report No: 20120730DJ573
Test No:
LampCAT: : LED
Lamp flux(lm): -1.0
Number of Lamps: 0
Length(mm): 0
Phm Type: C

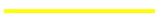


Luminaire:
Voltage(V): 230.000
Current(A): 0.047
Power (W): 9.100
PF: 0.841
Ballast type:
Width(mm): 0
Height(mm): 0

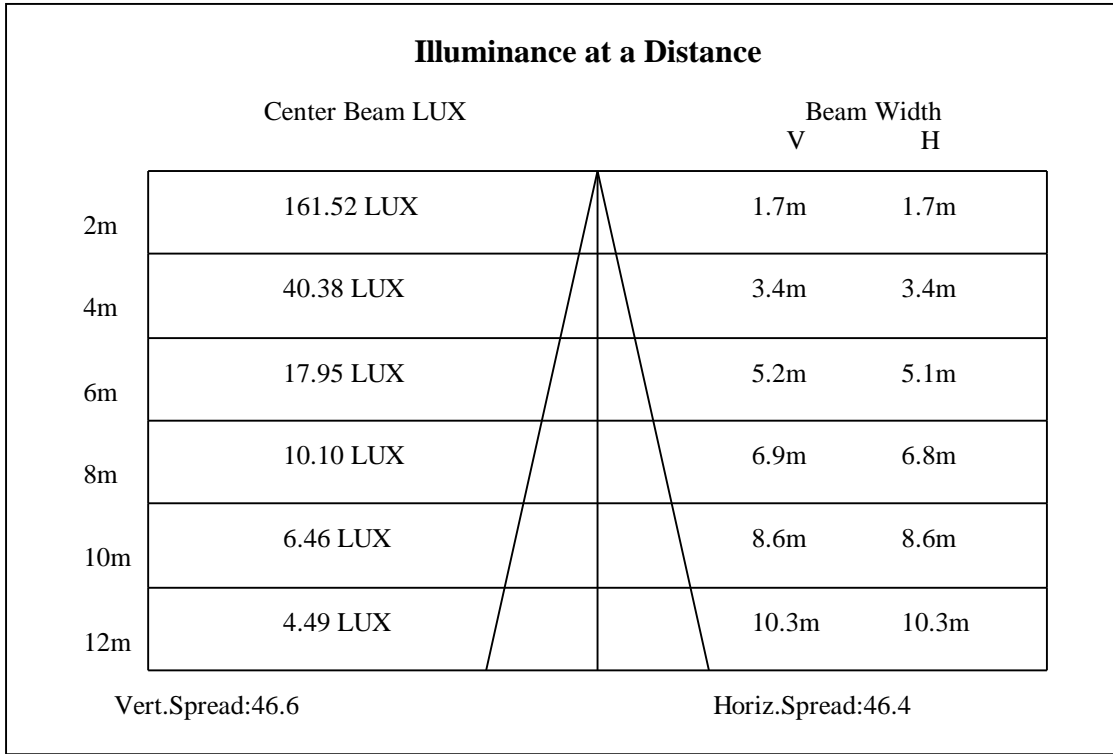
Photometric Results

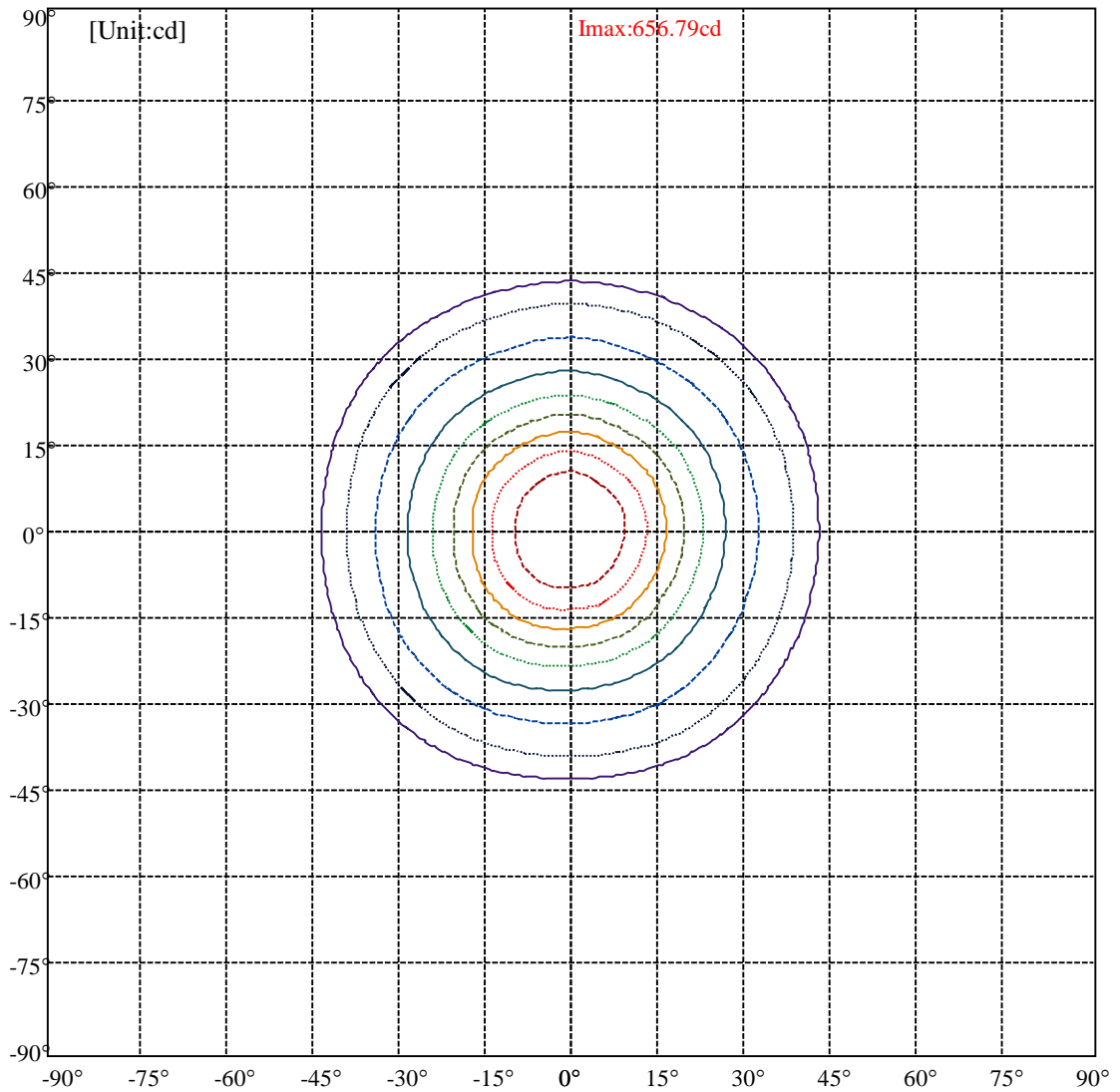
Lumens(lm): 479.40
Efficiency(%): 0.00%
Lumens(lm)/Power(W): 52.68
Central intensity(cd): 646.095
Maximum intensity(cd): 656.795
Angle of maximum intensity: C=30.0 γ =2.0
Beam Angle(50% lmax): [H]Left=25.6 Right=20.8
[V]Left=26.3 Right=20.3
Field angle(10% lmax): [H]Left=44.9 Right=40.4
[V]Left=45.3 Right=40.1
Maximum s/h: C0_180=0.36 C90_270=0.37
Up flux rate of lamp(%): 0.00%
Down flux rate of lamp(%): 0.00%
Up flux rate of LUM(%): - -
Down flux rate of LUM(%): 100.00%
CIE Type : Direct lighting
Output flux ratio in π solid angle : 99.527%



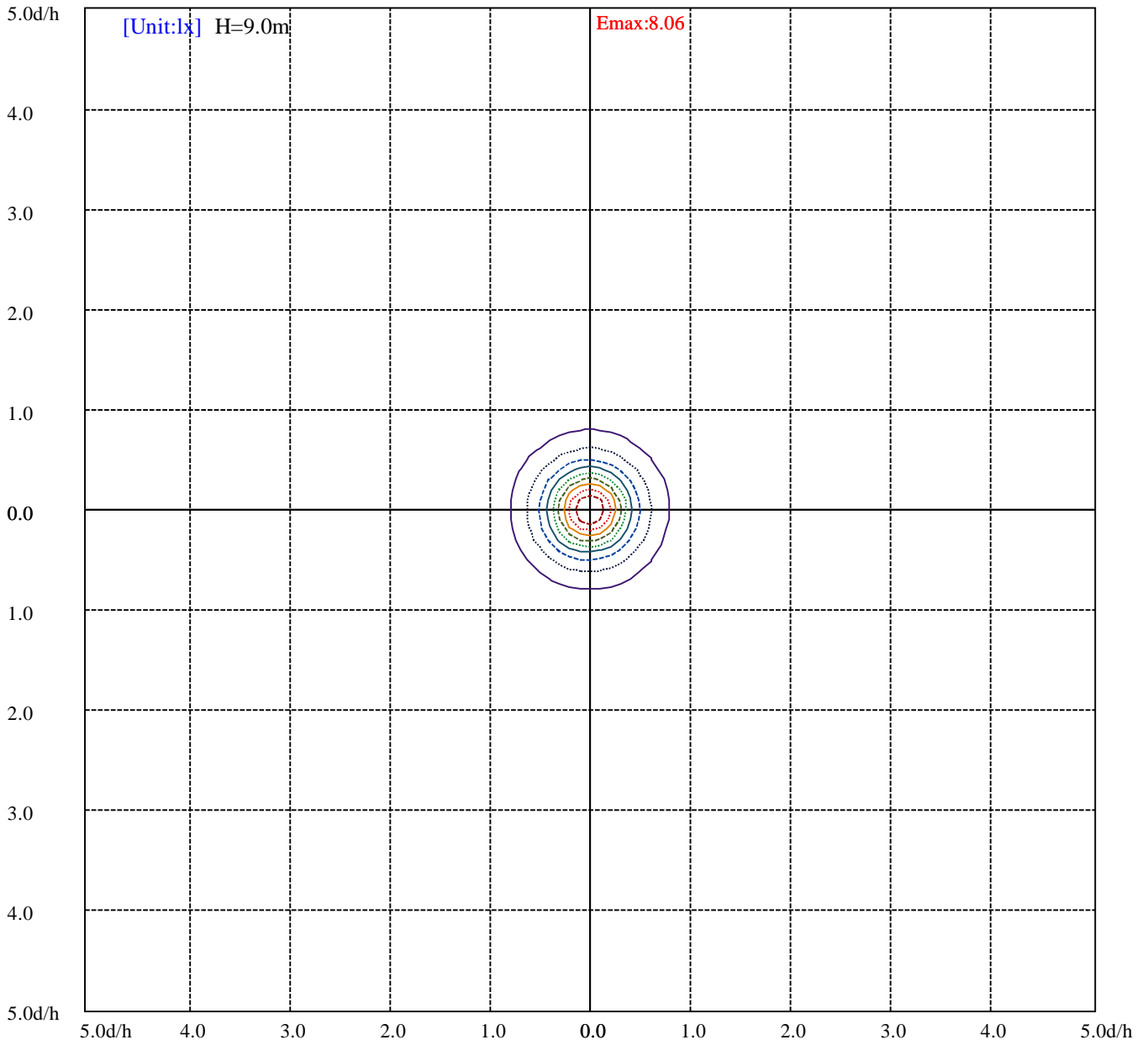


C30(Max): 
C0/C180: 
C90/C270: 





(10% Imax) 65.5193	—
(20% Imax) 131.039	⋯
(30% Imax) 196.558	- - -
(40% Imax) 262.077	—
(50% Imax) 327.596	⋯
(60% Imax) 393.116	- - -
(70% Imax) 458.635	—
(80% Imax) 524.154	⋯
(90% Imax) 589.674	- - -



- (10%Emax) 0.8061951 ————
- (20%Emax) 1.612395 (dotted)
- (30%Emax) 2.41858 - - - - - (dashed)
- (40%Emax) 3.224778 ————
- (50%Emax) 4.030975 (dotted)
- (60%Emax) 4.837173 - - - - - (dashed)
- (70%Emax) 5.643371 ————
- (80%Emax) 6.449555 (dotted)
- (90%Emax) 7.255753 - - - - - (dashed)